



Elemental ULTRA

Elemental ULTRA - Regular Use

is characterized by an optimum performance in daily and simple use.

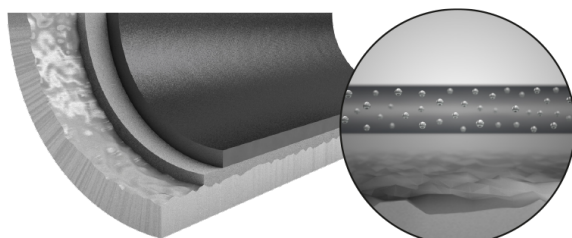
Regular Use products are our starting range solutions.

- Versatile system for simple, daily use
- Resistant top coat
- Good scratch and abrasion resistance
- Good non-stick effect
- Various color option available

Characteristic

Number of Layer	2
Coating Thickness μm	20-25
Curing Temperature $^{\circ}\text{C}$	420
Service Temperature $^{\circ}\text{C}$	250

3 2 1



Elemental Ultra is an universal, two-coat water-based non-stick system. Due to being fit-for-purpose and having a good non-stick effect, this system is well suited for daily, simple use.

1. Robust top coat for a long-lasting non-stick effect
2. Primer with very good adhesion to the substrate
Specially prepared substrate for an optimum adhesion of the coating to the cookware
3. Specially prepared substrate for an optimum adhesion of the coating to the cookware

Substrates

Substrate	Pretreatment	Suitability
pressed/forged alu	sandblasting with corundum	✓✓
Alu cast	sandblasting with corundum	✓
Stainless steel	n.a.	✗

Testing Methods

