

## DURIT Granistone HL

Our "granite" version with excellent abrasion resistance

Appealing granite look with rough, hard surface.  
Good abrasion resistance and scratch resistance.  
Developed for top level cookware.

[Consumers can find out what DURIT Granistone HL is all about.](#)

This product is also available in a "Maximizing Green" variant.

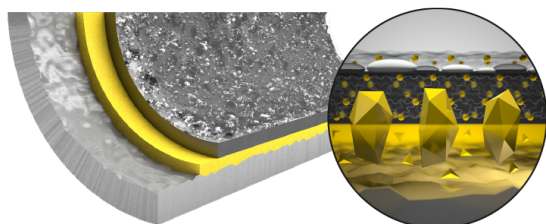
[Here you can see what that means for you as a consumer.](#)

- Unique granite look with slightly rough surface
- Good scratch and abrasion resistance
- Outstanding non-stick properties
- Very good cleanability

## Characteristic

Number of Layer	3
Coating Thickness $\mu\text{m}$	40-45
Curing Temperature $^{\circ}\text{C}$	420
Service Temperature $^{\circ}\text{C}$	250
Scratch resistance	★★★★^
Abrasion (BS)	★★★★^
Non-stick (LGA)	★★★★★
Non-stick (LGA & milk)	★★★★★
Corrosion resistance	★★★★^

5 4 3 2 1



### DURIT Granistone HL (GRANISTONE HL)

is an outstanding three-layer non-stick coating without ceramic reinforcement in the mid layers. DURIT Granistone HL is based on the High Level technology with a special polymer matrix. The system set itself apart due to its high quality hard and rough surface.

1. Surface sealing applied wet-in-wet
  2. Granite effect coating with polymer matrix technology is applied wet-in-wet
  3. Mid coat with innovative polymer matrix enables optimum abrasion resistance
  4. Primer with strong ceramic reinforcement for highest durability
  5. Specially prepared substrate for an optimum adhesion of the coating to the cookware product
- DURIT Granistone HL

## Substrates

Substrate	Pretreatment	Suitability
pressed/forged alu	sandblasting with corundum	✓✓
Alu cast	sandblasting with corundum	✓✓
Stainless steel	n.a.	✗

## **Testing Methods**

### **Basic Properties**

- Suitability for Food Contact
- Visual Aspects
- Dry Film Thickness (DFT)
- Adhesion (Cross hatch)

### **Non-stick Tests**

- Egg-/Milk-/Pancake Test
- Milk Test

### **Corrosion Tests**

- Salt Water Test
- Rice-Tomato Test
- Tomato Test

### **Abrasion Tests**

- LGA Abrasion Test
- MTP Abrasion Test
- British Standard Abrasion Test
- Dry Abrasion Test